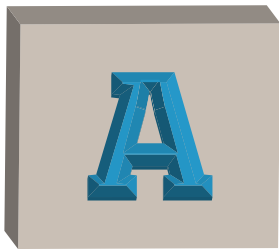
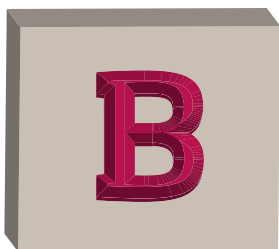


# The ABCs of GISc: From A to E



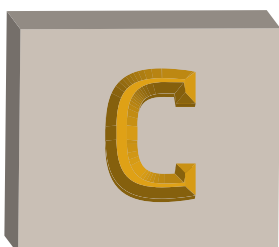
## ATTRIBUTE

Even the most basic terms are important to define, as these are referenced and built upon as your knowledge becomes more advanced. With that in mind, an attribute is simply a trait or characteristic of a geographic feature. This information can include a measurement or an address and is commonly stored in table form.<sup>1</sup>



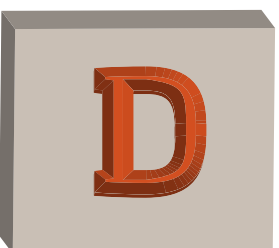
## BASEMAP OR BASE LAYER

In GISc, establishing context is essential. Everything that's mapped is spatially related and dependent on its neighbors. Made for spatial reference, a basemap is the foundational element upon which other layers of a map are built. A basemap will commonly feature streets, bodies of water, parcels and various elevation points.<sup>2</sup>



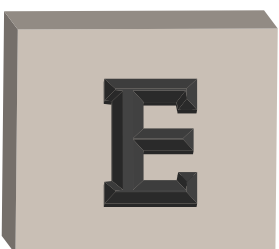
## CONTROL POINT

To transfer geospatial data into digital systems, GISc professionals use what's called control points. These are relatively precise X and Y coordinates of a given location that allow for highly accurate, degree-specific mapping.<sup>3</sup>



## DATABASE MANAGEMENT SYSTEM (DBMS)

A DBMS is a digital storage system that allows GISc professionals to input data and statistics, storing the information and allowing them to access and update it as they please.<sup>3</sup>



## EQUAL INTERVAL CLASSIFICATION

There are several ways to classify information on a map. For a GISc professional, choosing the right classification for a given set of data is inherently important. One option is equal interval classification. This system separates attributes on a map and reclassifies them into corresponding size ranges, which allows the map's data and key to be easily compartmentalized and easily read.<sup>3</sup>

1. Retrieved on May 25, 2017, from [co.shasta.ca.us/docs/libraries/gis-docs/docs/Glossary\\_of\\_Basic\\_GIS\\_terms.pdf?sfvrsn=0](http://co.shasta.ca.us/docs/libraries/gis-docs/docs/Glossary_of_Basic_GIS_terms.pdf?sfvrsn=0)

2. Dempsey, C. (December 2011). *Basemaps Defined*. Retrieved on May 31, 2017, from [gislounge.com/basemaps-defined/](http://gislounge.com/basemaps-defined/)

3. Retrieved on May 25, 2017, from [gisgeography.com/gis-dictionary-definition-glossary/](http://gisgeography.com/gis-dictionary-definition-glossary/)